

Customization is available  
Products and specifications are  
subject to be changed without notice

#### Optional Feature

- 2.5-6.0m/98.4-236inch duplex mast
- Special carriage and backrest
- Solid tyre
- Cabin
- Heater and air condition
- Other dimension forks
- Sideshifter
- Other attachment
- Fire extinguisher
- Suspension seat
- Dual air cleaner or special air cleaner
- Rear working light
- Customer painting



**E-P Equipment Co.,LTD**  
Let's grow together...

[www.ep-ep.com](http://www.ep-ep.com)  
[www.epforklift.com](http://www.epforklift.com)

#### China: (Headquarters)

##### **E-P EQUIPMENT CO., LTD**

No. 121 YongHua Street, Shi Qiao Road, Xia Cheng  
Qu Hangzhou, China  
Tel: 86-571-28035676/28035633/28035657/28035653  
Fax: 86-571-28035665  
Email: [info@ep-ep.com](mailto:info@ep-ep.com)

#### USA:

##### **E-P EQUIPMENT, USA CORP.**

1770 Campton Road  
Inmam, SC 29349  
Tel: 864-472-2776  
Fax: 864-472-2765  
E-mail: [info@ep-ep.com](mailto:info@ep-ep.com)

#### Japan:

##### **E-P EQUIPMENT JAPAN**

#1052-16-10 Hirao, Inagi-shi  
Tokyo 206-0823 Japan  
Tel: 81-42-3506422  
Fax: 81-42-3506423  
E-mail: [ep-japan@ep-ep.com](mailto:ep-japan@ep-ep.com)

#### Korea:

##### **E-P EQUIPMENT KOREA**

1058-Ra Dong, Buck Yi-Dong,  
Ilsan/Gu, Koyang/Shi, Kyunggi/Du,  
Korea  
Tel: 82-31-9254100  
Fax: 82-31-9254102  
E-mail: [ep@ep-ep.co.kr](mailto:ep@ep-ep.co.kr)



CE  
ISO9000


# Rseries

5.0/6.0/7.0/8.0/10.0T  
11000/13200/15400/17600/22000lb  
Diesel




[www.ep-ep.com](http://www.ep-ep.com)  
[www.epforklift.com](http://www.epforklift.com)

### R series 5.0-7.0t forklift specification

NO.		Manufacture								
General	1	Basic model		CPCD50	CPCD50	CPCD60	CPCD60	CPCD70	CPCD70	
	2	Type		RW14	RW28	RW14	RW28	RW14	RW28	
	3	Power type		Diesel	Diesel	Diesel	Diesel	Diesel	Diesel	
	4	Rated capacity		Kg	5000	5000	6000	6000	7000	7000
	5	Load center		mm	600	600	600	600	600	600
Dimensions	6	Lift height		mm	3000	3000	3000	3000	3000	
	7	Free lift height		mm	160	160	160	160	165	165
	8	Fork size	L×W×T	mm	1200×150×60	1200×150×60	1200×150×60	1200×150×60	1200×150×65	1200×150×65
	9	Fork spread(outside)	Min./Max.	mm	300/1530	300/1530	300/1530	300/1530	300/1530	300/1530
	10	Mast tilt range	F/R	deg	6/12	6/12	6/12	6/12	6/12	6/12
	11	Fork overhang(Wheel center to fork face)		mm	610	610	610	610	615	615
	12-16	Overall dimensions	Length to face of fork	mm	3475	3475	3475	3475	3600	3600
			Overall width	mm	1990	1990	1990	1990	1990	1990
			Mast lowered height	mm	2500	2500	2500	2500	2500	2500
			Mast extended height	mm	4420	4420	4420	4420	4420	4420
	15	Overall dimensions	Mast extended height	mm	4420	4420	4420	4420	4420	4420
	Overhead guard height		mm	2280	2280	2280	2280	2280	2280	
	17	Turning radius(outside)		mm	3160	3160	3200	3200	3200	3200
	18	Min. right angle aisle width		mm	2780	2780	2850	2850	2895	2895
19	Min. right angle stacking aisle width (Add load length and clearance)		mm	3770	3770	3810	3810	3895	3895	
Performance	20	Speed	Travel	Km/h	26	26	24	24	24	24
	Lifting(Full load)		mm/sec	420	420	420	420	340	340	
	22	Max. gradeability(Full load)		%	20	20	20	20	20	20
	23	Self weight		Kg	8000	8000	8400	8400	9300	9300
Wheels & tires	24	Tyres	Front		8.25-15-14PR	8.25-15-14PR	8.25-15-14PR	8.25-15-14PR	8.25-15-14PR	8.25-15-14PR
	25		Rear		8.25-15-14PR	8.25-15-14PR	8.25-15-14PR	8.25-15-14PR	8.25-15-14PR	8.25-15-14PR
	26	Tread	Front/Rear	mm	1489/1460	1489/1460	1489/1460	1489/1460	1489/1460	1489/1460
	27	Wheelbase		mm	2250	2250	2250	2250	2250	2250
	28	Ground clearance		mm	170	170	170	170	170	170
	29	Battery	Voltage/Capacity(5HR)	V/AH	24/105	24/105	24/105	24/105	24/105	24/105
Power & transmission	30	Engine	Model		6BG1QP	QSB4.5	6BG1QP	QSB4.5	6BG1QP	QSB4.5
	31		Manufacture		ISUZU	CUMMINS	ISUZU	CUMMINS	ISUZU	CUMMINS
	32		Rated output/r.p.m.	kw	84.6/2200	82/2200	84.6/2200	82/2200	84.6/2200	82/2200
	33		Rated torque/r.p.m.	N·m	411/1400~1600	488/1500	411/1400~1600	488/1500	411/1400~1600	488/1500
	34		No. of cylinder		6	4	6	4	6	4
	35		Bore×Stroke	mm	105×125	107×124	105×125	107×124	105×125	107×124
	36	Displacement		cc	6494	4460	6494	4460	6494	4460
	37	Fuel tank capacity		L	120	120	120	120	120	120
	38	Transmissions	Manufacture		CHINA	CHINA	CHINA	CHINA	CHINA	CHINA
	39		Type		Powershift	Powershift	Powershift	Powershift	Powershift	Powershift
	40		Stage	FWD/RVS		2/2	2/2	2/2	2/2	2/2
41	Operating pressure	For attachments	MPa	17	17	17	17	17	17	


1.Special lifting height available. 2.Attachment available.  
 3.The specification in the table are for standard models only. For further information please contact us .  
 4.Specification are subject to change without notice.

### R series 8.0-10.0t forklift specification

NO.		Manufacture						
General	1	Basic model		CPCD80		CPCD100		
	2	Type		RW14	RW28	RW14	RW28	
	3	Power type		Diesel	Diesel	Diesel	Diesel	
	4	Rated capacity		Kg	8000	8000	10000	10000
	5	Load center		mm	600	600	600	600
Dimensions	6	Lift height		mm	3000	3000	3000	3000
	7	Free lift height		mm	200	200	200	200
	8	Fork size	L×W×T	mm	1500×160×75	1500×160×75	1500×160×75	1500×160×75
	9	Fork spread(outside)	Min./Max.	mm	440/1800	440/1800	440/1800	440/1800
	10	Mast tilt range	F/R	deg	6/12	6/12	6/12	6/12
	11	Fork overhang(Wheel center to fork face)		mm	705	705	730	730
	12-16	Overall dimensions	Length to face of fork	mm	3896	3896	4235	4235
			Overall width	mm	2165	2165	2165	2165
			Mast lowered height	mm	2850	2850	2850	2850
			Mast extended height	mm	4510	4510	4510	4510
	15	Overall dimensions	Mast extended height	mm	4510	4510	4510	4510
	Overhead guard height		mm	2490	2490	2490	2490	
	17	Turning radius(outside)		mm	3690	3690	4050	4050
	18	Min. right angle aisle width		mm	3300	3300	3600	3600
19	Min. right angle stacking aisle width (Add load length and clearance)		mm	6095	6095	6420	6420	
Performance	20	Speed	Travel	Km/h	26	26	26	26
	Lifting(Full load)		mm/sec	350	350	300	300	
	22	Max. gradeability(Full load)		%	20	20	20	20
	23	Self weight		Kg	11300	11300	13000	13000
Wheels & tires	24	Tyres	Front		9.00-20-14PR	9.00-20-14PR	9.00-20-14PR	9.00-20-14PR
	25		Rear		9.00-20-14PR	9.00-20-14PR	9.00-20-14PR	9.00-20-14PR
	26	Tread	Front/Rear	mm	1600/1700	1600/1700	1600/1700	1600/1700
	27	Wheelbase		mm	2500	2500	2800	2800
	28	Ground clearance		mm	250	250	250	250
	29	Battery	Voltage/Capacity(5HR)	V/AH	24/105	24/105	24/105	24/105
Power & transmission	30	Engine	Model		6BG1QP	QSB4.5	6BG1QP	QSB4.5
	31		Manufacture		ISUZU	CUMMINS	ISUZU	CUMMINS
	32		Rated output/r.p.m.	kw	84.6/2200	82/2200	84.6/2200	82/2200
	33		Rated torque/r.p.m.	N·m	411/1400~1600	488/1500	411/1400~1600	488/1500
	34		No. of cylinder		6	4	6	4
	35		Bore×Stroke	mm	105×125	107×124	105×125	107×124
	36	Displacement		cc	6494	4460	6494	4460
	37	Fuel tank capacity		L	120	120	120	120
	38	Transmissions	Manufacture		CHINA	CHINA	CHINA	CHINA
	39		Type		Powershift	Powershift	Powershift	Powershift
	40		Stage	FWD/RVS		2/2	2/2	2/2
41	Operating pressure	For attachments	MPa	17	17	17	17	


1.Special lifting height available. 2.Attachment available.  
 3.The specification in the table are for standard models only. For further information please contact us .  
 4.Specification are subject to change without notice.

**R series 11000-15400lb forklift specification**

NO.		Manufacture								
General	1	Basic model		CPCD50	CPCD50	CPCD60	CPCD60	CPCD70	CPCD70	
	2	Type		RW14	RW28	RW14	RW28	RW14	RW28	
	3	Power type		Diesel	Diesel	Diesel	Diesel	Diesel	Diesel	
	4	Rated capacity		lb	11000	11000	13200	13200	15400	15400
	5	Load center		inch	24	24	24	24	24	24
Dimensions	6	Lift height		inch	118	118	118	118	118	
	7	Free lift height		inch	6.3	6.3	6.3	6.3	6.5	6.5
	8	Fork size	L×W×T	inch	47×5.8×2.36	47×5.8×2.36	47×5.8×2.36	47×5.8×2.36	47×5.8×2.56	47×5.8×2.56
	9	Fork spread(outside)	Min./Max.	inch	11.8/60	11.8/60	11.8/60	11.8/60	11.8/60	11.8/60
	10	Mast tilt range	F/R	deg	6/12	6/12	6/12	6/12	6/12	6/12
	11	Fork overhang(Wheel center to fork face)		inch	24	24	24	24	24.2	24.2
	12	Overall dimensions	Length to face of fork	inch	136.8	136.8	138.8	138.8	141.7	141.7
	13		Overall width	inch	78.3	78.3	78.3	78.3	78.3	78.3
	14		Mast lowered height	inch	98.4	98.4	98.4	98.4	98.4	98.4
	15		Mast extended height	inch	174	174	174	174	174	174
	16		Overhead guard height	inch	89.8	89.8	89.8	89.8	89.8	89.8
	17	Turning radius(outside)		inch	124.4	124.4	126	126	126	126
	18	Min. right angle aisle width		inch	109	109	112.2	112.2	142	142
	19	Min. right angle stacking aisle width (Add load length and clearance)		inch	148.4	148.4	150	150	153.3	153.3
Performance	20	Speed	Travel	mile/h	16	16	14	14	14	14
	21		Lifting(Full load)	in/sec	16.5	16.5	15.7	15.7	13.4	13.4
	22	Max. gradeability(Full load)		%	20	20	20	20	20	20
	23	Self weight		Lb	17600	17600	18480	18480	20460	20460
Wheels& tires	24	Tyres	Front		8.25-15-14PR	8.25-15-14PR	8.25-15-14PR	8.25-15-14PR	8.25-15-14PR	8.25-15-14PR
	25		Rear		8.25-15-14PR	8.25-15-14PR	8.25-15-14PR	8.25-15-14PR	8.25-15-14PR	8.25-15-14PR
	26	Tread	Front/Rear	inch	58.6/57.5	58.6/57.5	58.6/57.5	58.6/57.5	58.6/57.5	58.6/57.5
	27	Wheelbase		inch	88.6	88.6	88.6	88.6	88.6	88.6
	28	Ground clearance		inch	6.69	6.69	6.69	6.69	6.69	6.69
	29	Battery	Voltage/Capacity(5HR)	V/AH	24/105	24/105	24/105	24/105	24/105	24/105
Power & transmission	30	Engine	Model		6BG1QP	QSB4.5	6BG1QP	QSB4.5	6BG1QP	QSB4.5
	31		Manufacture		ISUZU	CUMMINS	ISUZU	CUMMINS	ISUZU	CUMMINS
	32		Rated output/r.p.m.	hp	113.4/2200	109.9/2200	113.4/2200	109.9/2200	113.4/2200	109.9/2200
	33		Rated torque/r.p.m.	N·m	411/1400~1600	488/1500	411/1400~1600	488/1500	411/1400~1600	488/1500
	34		No. of cylinder		6	4	6	4	6	4
	35		Bore×Stroke	inch	4.13×4.9	4.21×4.88	4.13×4.9	4.21×4.88	4.13×4.9	4.21×4.88
	36	Displacement		cc	6494	4460	6494	4460	6494	4460
	37	Fuel tank capacity		L	120	120	120	120	120	120
	38	Transmissions	Manufacture		CHINA	CHINA	CHINA	CHINA	CHINA	CHINA
	39		Type		Powershift	Powershift	Powershift	Powershift	Powershift	Powershift
	40		Stage	FWD/RVS		2/2	2/2	2/2	2/2	2/2
41	Operating pressure	For attachments	MPa	17	17	17	17	17	17	

1.Special lifting height available. 2.Attachment available.  
 3.The specification in the table are for standard models only. For further information please contact us.  
 4.Specification are subject to change without notice.

**R series 17600-22000lb forklift specification**

NO.		Manufacture						
General	1	Basic model		CPCD80		CPCD100		
	2	Type		RW14	RW28	RW14	RW28	
	3	Power type		Diesel	Diesel	Diesel	Diesel	
	4	Rated capacity		lb	17600	17600	22000	22000
	5	Load center		inch	23.6	23.6	23.6	23.6
Dimensions	6	Lift height		inch	118	118	118	118
	7	Free lift height		inch	7.87	7.87	7.87	7.87
	8	Fork size	L×W×T	inch	59.1×6.30×2.95	59.1×6.30×2.95	59.1×6.30×3.15	59.1×6.30×3.15
	9	Fork spread(outside)	Min./Max.	inch	17.3/70.9	17.3/70.9	17.3/70.9	17.3/70.9
	10	Mast tilt range	F/R	deg	6/12	6/12	6/12	6/12
	11	Fork overhang(Wheel center to fork face)		inch	27.8	27.8	28.7	28.7
	12	Overall dimensions	Length to face of fork	inch	153	153	167	167
	13		Overall width	inch	85.2	85.2	85.2	85.2
	14		Mast lowered height	inch	112	112	112	112
	15		Mast extended height	inch	178	178	178	178
	16		Overhead guard height	inch	98	98	98	98
	17	Turning radius(outside)		inch	145	145	159	159
	18	Min. right angle aisle width		inch	130	130	142	142
	19	Min. right angle stacking aisle width (Add load length and clearance)		inch	240	240	253	253
Performance	20	Speed	Travel	mile/h	16	16	16	16
	21		Lifting(Full load)	in/sec	13.8	13.8	11.8	11.8
	22	Max. gradeability(Full load)		%	20	20	20	20
	23	Self weight		Lb	24860	24860	28600	28600
Wheels& tires	24	Tyres	Front		9.00-20-14PR	9.00-20-14PR	9.00-20-14PR	9.00-20-14PR
	25		Rear		9.00-20-14PR	9.00-20-14PR	9.00-20-14PR	9.00-20-14PR
	26	Tread	Front/Rear	inch	63/67	63/67	63/67	63/67
	27	Wheelbase		inch	98.4	98.4	110	110
	28	Ground clearance		inch	9.84	9.84	9.84	9.84
	29	Battery	Voltage/Capacity(5HR)	V/AH	24/105	24/105	24/105	24/105
Power & transmission	30	Engine	Model		6BG1QP	QSB4.5	6BG1QP	QSB4.5
	31		Manufacture		ISUZU	CUMMINS	ISUZU	CUMMINS
	32		Rated output/r.p.m.	hp	113.4/2200	109.9/2200	113.4/2200	109.9/2200
	33		Rated torque/r.p.m.	N·m	411/1400~1600	488/1500	411/1400~1600	488/1500
	34		No. of cylinder		6	4	6	4
	35		Bore×Stroke	inch	4.13×4.92	4.21×4.88	4.13×4.92	4.21×4.88
	36	Displacement		cc	6494	4460	6494	4460
	37	Fuel tank capacity		L	120	120	120	120
	38	Transmissions	Manufacture		CHINA	CHINA	CHINA	CHINA
	39		Type		Powershift	Powershift	Powershift	Powershift
	40		Stage	FWD/RVS		2/2	2/2	2/2
41	Operating pressure	For attachments	MPa	17	17	17	17	

1.Special lifting height available. 2.Attachment available.  
 3.The specification in the table are for standard models only. For further information please contact us.  
 4.Specification are subject to change without notice.

**R series 5.0-7.0t forklift mast specification**

Type	Mast fork height	Overall height		Free lift	Tilt range		Capacity		
		Lowered	Extended		With backrest	FWD	RWD	Load capacity at 600mm	
			with backrest	5 T				6 T	7 T
		mm	mm	mm	mm	Deg	Deg	Kg	Kg
Wide view mast	2500	2250	3920	160	6	12	5000	6000	7000
	2700	2350	4120	160	6	12	5000	6000	7000
	3000	2500	4420	160	6	12	5000	6000	7000
	3300	2650	4720	160	6	12	5000	6000	7000
	3600	2800	5020	160	6	12	5000	6000	7000
	4000	3000	5420	160	6	12	5000	6000	7000
	4300	3200	5720	160	6	6	5000	6000	7000
	4500	3300	5920	160	6	6	5000	6000	7000
	4800	3450	6220	160	6	6	5000	6000	7000
	5000	3550	6420	160	6	6	5000	6000	7000
	5500	3850	6920	160	3	6	4700	5700	6600
	6000	4100	7420	160	3	6	4400	5400	6400
	Wide view full free 2-stage mast	2500	2185	3640	1048	6	12	5000	6000
Wide view full free 3-stage mast	4000								
	4500	2720	5920	1323	6	6	4500	5500	6200
	4800	2820	6220	1423	6	6	4500	5500	6200
	5000	2870	6420	1473	6	6	4500	5500	6200
	5500	3070	6920	1673	3	6	4200	5200	5800
	6000	3220	7420	1823	3	6	4000	5000	5500
7000	3670	8420	2273	3	6	2900	3300	3600	

**R series 11000-15400lb forklift mast specification**

Type	Mast fork height	Overall height		Free lift	Tilt range		Capacity		
		Lowered	Extended		With backrest	FWD	RWD	Load capacity at 24 inch	
			with backrest	11000lb				13000lb	15400lb
		inch	inch	inch	inch	Deg	Deg	lb	lb
Wide view mast	98.4	88.6	154	6.3	6	12	11000	13000	15400
	106	93	162	6.3	6	12	11000	13000	15400
	118	98	174	6.3	6	12	11000	13000	15400
	130	104	186	6.3	6	12	11000	13000	15400
	142	110	198	6.3	6	12	11000	13000	15400
	157	118	213	6.3	6	12	11000	13000	15400
	169	126	225	6.3	6	6	11000	13000	15400
	177	130	233	6.3	6	6	11000	13000	15400
	189	136	245	6.3	6	6	11000	13000	15400
	197	140	253	6.3	6	6	11000	13000	15400
	217	152	272	6.3	3	6	10340	12500	14500
	236	161	292	6.3	3	6	9680	12000	14000
	Wide view full free 2-stage mast	98.4	86	143	41.3	6	12	11000	13200
Wide view full free 3-stage mast	158								
	177	107	233	52	6	6	9900	12100	13640
	189	111	245	56	6	6	9900	12100	13640
	197	113	253	58	6	6	9900	12100	13640
	217	121	272	65.9	3	6	9240	11440	12760
	236	127	292	71.8	3	6	8800	11000	12100
276	145	332	89.5	3	6	6380	7260	7920	

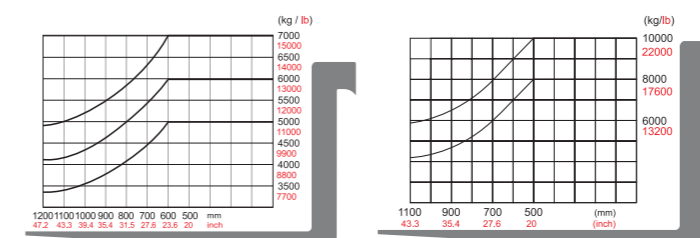
**R series 8.0-10.0t forklift mast specification**

Type	Model	Mast fork height	Overall height		Free lift	Tilt range		Capacity		
			Lowered	Extended		With backrest	FWD	RWD	Load capacity at 600 mm	
				with backrest	5 T				6 T	7 T
			mm	mm	mm	mm	Deg	Deg	Kg	Kg
Wide view mast	8T	2500	2450	3710	200	6	12	8000	8000	8000
		2700	2550	3910	200	6	12	8000	8000	8000
		3000	2700	4210	200	6	12	8000	8000	8000
		3300	2850	4510	200	6	12	8000	8000	8000
		3600	3000	4810	200	6	12	8000	8000	8000
		4000	3200	5210	200	6	12	8000	8000	8000
		4300	3400	5510	200	6	6	8000	8000	8000
		4500	3500	5710	200	6	6	8000	8000	8000
		4800	3650	6010	200	6	6	7600	7600	7600
		5000	3750	6210	200	6	6	7600	7600	7600
		5500	4050	6740	200	3	6	7300	7300	7300
		6000	4300	7240	200	3	6	6900	6900	6900
		Wide view mast	10T	2500	2600	4055	200	6	12	10000
2700	2700			4255	200	6	12	10000	10000	10000
3000	2850			4555	200	6	12	10000	10000	10000
3300	3000			4855	200	6	12	10000	10000	10000
3600	3150			5155	200	6	12	10000	10000	10000
4000	3350			5555	200	6	12	10000	10000	10000
4300	3550			5855	200	6	6	10000	10000	10000
4500	3650			6055	200	6	6	10000	10000	10000
4800	3800			6255	200	6	6	9500	9500	9500
5000	3900			6555	200	6	6	9500	9500	9500
5500	4200			7055	200	3	6	8500	8500	8500
6000	4450			7555	200	3	6	7500	7500	7500

**R series 17600-22000lb forklift mast specification**

Type	Model	Mast fork height	Overall height		Free lift	Tilt range		Capacity		
			Lowered	Extended		With backrest	FWD	RWD	Load capacity at 24 inch	
				with backrest	17600lb				22000lb	
			inch	inch	inch	inch	Deg	Deg	lb	lb
Wide view mast	17600lb	98.4	96.5	146	7.87	6	12	17600	17600	17600
		106	100	154	7.87	6	12	17600	17600	17600
		118	106	166	7.87	6	12	17600	17600	17600
		130	112	178	7.87	6	12	17600	17600	17600
		142	118	189	7.87	6	12	17600	17600	17600
		157	126	205	7.87	6	12	17600	17600	17600
		169	134	217	7.87	6	6	17600	17600	17600
		177	138	225	7.87	6	6	17600	17600	17600
		189	144	237	7.87	6	6	16720	16720	16720
		197	148	244	7.87	6	6	16720	16720	16720
		217	159	265	7.87	3	6	16060	16060	16060
		236	169	285	7.87	3	6	15180	15180	15180
		Wide view mast	22000lb	98.4	102	160	7.87	6	12	22000
106	106			168	7.87	6	12	22000	22000	22000
118	112			179	7.87	6	12	22000	22000	22000
130	118			191	7.87	6	12	22000	22000	22000
142	124			203	7.87	6	12	22000	22000	22000
157	132			219	7.87	6	12	22000	22000	22000
169	140			231	7.87	6	6	22000	22000	22000
177	144			238	7.87	6	6	22000	22000	22000
189	150			250	7.87	6	6	20900	20900	20900
197	154			258	7.87	6	6	20900	20900	20900
217	165			278	7.87	3	6	18700	18700	18700
236	175			297	7.87	3	6	16500	16500	16500

**LOAD CHART**



**DIMENSIONS**

